

Buffalo Industries LLC – *Your partner for cleaning and maintenance products™*



*Proudly Serving the Paint,
Industrial, MRO, Marine &
Auto Industries Since 1929*

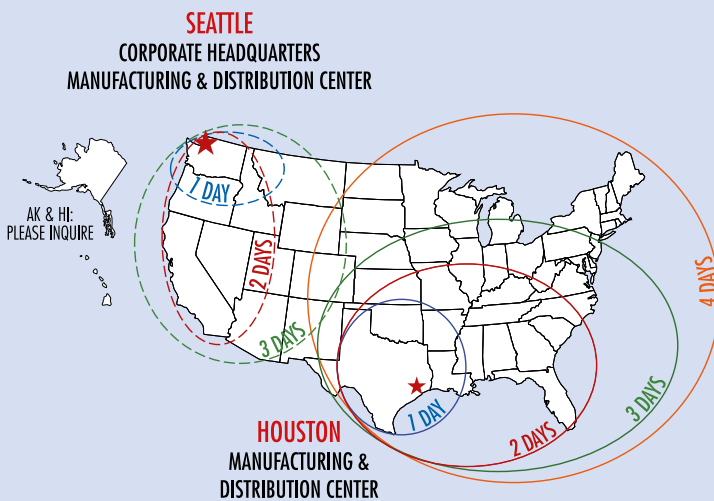
www.BuffaloIndustries.com





Buffalo has been “green” since long before the term was coined. Recycling and sustainability are the base upon which our business was founded. Since 1929 we’ve been producing quality recycled and new cloth rags for the Paint, Industrial, MRO, Marine and Auto industries. Our company helps to keep millions of pounds of textiles out of the waste stream every year.

Locations & LTL Transit Times



At Buffalo, we continue to make investments in our future to ensure that our product offerings, customer service, sales staff and warehousing are cutting edge. We have manufacturing and distribution centers near Seattle and in Houston, uniquely positioning us to service the entire country quickly and cost-effectively.

Thank you for browsing our catalog and for your continued business. You can find more information on our website at BuffaloIndustries.com, including product details and images available for download. For further assistance, please contact customer service: **800-683-0052**. Now, more than ever, we truly are **“your partner for cleaning and maintenance products.”™**



RECYCLED COLORED T-SHIRTS



DISPOSABLE COVERALLS



HUCK TOWELS



TERRY APPLICATOR PADS



MICROFIBER DETAIL TOWELS



INDUSTRIAL SPILL KITS



UNIVERSAL SORBENT PADS

Rags & Wipers:

- White Cloth Rags - Recycled and New Pages 2-3
- Colored Cloth Rags - Recycled Pages 4-5

Cloths & Towels:

- Bar Towels & Huck Towels Page 6
- Terry Towels & White Half Towels Page 7
- Microfiber Cleaning Cloths & Wipes Page 8
- Multi-Purpose, Diaper, Flannel & Glass Cloths . . . Page 9
- Shop Towels & Painter's Towels. Page 10

Sundries:

- Applicator Pads, Tack Cloths, Cheese Cloth, Combo Sponges, Wash Mitts, Moving Pads Page 11
- SURLY Soap Page 12

Protective Clothing:

- Disposable Coveralls & Spray Socks Page 13
- Disposable Shoe & Boot Covers Page 14

Sorbents & Spill Kits:

- Oil-Only Retail Sorbents Page 15
- Oil-Only Sorbents Page 16
- Universal Sorbents Page 17
- Industrial Spill Kits Pages 18-19

Display Units & Packaging Program:

- Pallet Displays, Planogram. Page 20
- Packaging Program Page 21



Recycled White Cloth Rags

Made from 100% recycled materials. Cloth rags are more durable than paper, cut in useable-sized pieces and are economical.



White T-Shirts

All white, knit, t-shirt material. Excellent, all-purpose wiping, cleaning and polishing cloth. Low-linting.

Industrial White T-Shirts

Off-white, smooth knit, t-shirt material. Value-priced t-shirt wiper for the price-conscious customer.

White T-Shirts with Colored Trim

White, t-shirt knit with colored trim or print. Very absorbent and economical.

White Sweatshirts

All white, cotton blend, sweatshirt material. Very absorbent and soft.

White Sheets

Absorbent, low-linting, smooth cloth. Cut in useable-sized pieces. Ideal for paint and industrial job applications.



Compressed Poly Bags

Approximately half the size of the equivalent weight box. Our 4, 8, 10, 25 and 50 pound sizes are pressure-packed in high-stretch, durable, clear poly film. Our 4 and 8 pound compressed bags are retail-ready with easy-carry handles.

RECYCLED WHITE CLOTH RAGS

| ITEM # | DESCRIPTION | QTY/CASE | CASE WT (LBS) | UPC NUMBER |
|-----------------------|---------------------------|----------|---------------|-----------------|
| WHITE T-SHIRTS | | | | |
| 10521 | 1 Lb Bag | 25 | 29 | 0-32479-10521-4 |
| 60317 | 2 Lb Bag | 10 | 22 | 0-32479-60317-8 |
| 10520 | 4 Lb Box | | 4 | 0-32479-10520-7 |
| 10520PB | 4 Lb Compressed Poly Bag | 12 | 51 | 0-32479-11110-9 |
| 10522 | 5 Lb Box | | 5 | 0-32479-10522-1 |
| 10526 | 8 Lb Box | | 9 | 0-32479-11111-6 |
| 10526PB | 8 Lb Compressed Poly Bag | 6 | 51 | 0-32479-11112-3 |
| 10523 | 10 Lb Box | | 10 | 0-32479-10523-8 |
| 10523PB | 10 Lb Compressed Poly Bag | | 10 | 0-32479-10527-6 |
| 10524 | 25 Lb Box | | 25 | 0-32479-10524-5 |
| 10524PB | 25 Lb Compressed Poly Bag | | 25 | 0-32479-10528-3 |
| 10525 | 50 Lb Box | | 50 | 0-32479-10525-2 |
| 10525PB | 50 Lb Compressed Poly Bag | | 50 | 0-32479-10529-0 |

INDUSTRIAL WHITE T-SHIRTS

| | | | | |
|---------|---------------------------|----|----|-----------------|
| 10390 | 4 Lb Box | | 4 | 0-32479-10390-6 |
| 10390PB | 4 Lb Compressed Poly Bag | 12 | 50 | 0-32479-00390-9 |
| 10391 | 5 Lb Box | | 5 | 0-32479-10391-3 |
| 10392 | 8 Lb Box | | 9 | 0-32479-10392-0 |
| 10392PB | 8 Lb Compressed Poly Bag | 6 | 51 | 0-32479-00392-3 |
| 10393 | 10 Lb Box | | 10 | 0-32479-10393-7 |
| 10393PB | 10 Lb Compressed Poly Bag | | 10 | 0-32479-00393-0 |
| 10395 | 25 Lb Box | | 25 | 0-32479-10395-1 |
| 10395PB | 25 Lb Compressed Poly Bag | | 25 | 0-32479-00395-4 |
| 10397 | 50 Lb Box | | 50 | 0-32479-10397-5 |
| 10397PB | 50 Lb Compressed Poly Bag | | 50 | 0-32479-00397-8 |

WHITE T-SHIRTS WITH COLORED TRIM

| | | | | |
|---------|---------------------------|----|----|-----------------|
| 61580 | 1 Lb Bag | 25 | 29 | 0-32479-05000-2 |
| 10267 | 2 Lb Bag | 10 | 22 | 0-32479-11125-3 |
| 10260 | 4 Lb Box | | 4 | 0-32479-10260-2 |
| 10260PB | 4 Lb Compressed Poly Bag | 12 | 51 | 0-32479-11113-0 |
| 10262 | 5 Lb Box | | 5 | 0-32479-10262-6 |
| 10266 | 8 Lb Box | | 9 | 0-32479-11114-7 |
| 10266PB | 8 Lb Compressed Poly Bag | 6 | 51 | 0-32479-11115-4 |
| 10263 | 10 Lb Box | | 10 | 0-32479-10263-3 |
| 10263PB | 10 Lb Compressed Poly Bag | | 10 | 0-32479-10267-1 |
| 10264 | 25 Lb Box | | 25 | 0-32479-10264-0 |
| 10264PB | 25 Lb Compressed Poly Bag | | 25 | 0-32479-10268-8 |
| 10265 | 50 Lb Box | | 50 | 0-32479-10265-7 |
| 10265PB | 50 Lb Compressed Poly Bag | | 50 | 0-32479-10269-5 |

WHITE SWEATSHIRTS

| | | | | |
|---------|---------------------------|----|----|-----------------|
| 10481 | 1 Lb Bag | 25 | 29 | 0-32479-10481-1 |
| 10480 | 4 Lb Box | | 4 | 0-32479-10480-4 |
| 10480PB | 4 Lb Compressed Poly Bag | 12 | 51 | 0-32479-11130-7 |
| 10482 | 5 Lb Box | | 5 | 0-32479-10482-8 |
| 10486 | 8 Lb Box | | 9 | 0-32479-11131-4 |
| 10486PB | 8 Lb Compressed Poly Bag | 6 | 51 | 0-32479-11132-1 |
| 10483 | 10 Lb Box | | 10 | 0-32479-10483-5 |
| 10483PB | 10 Lb Compressed Poly Bag | | 10 | 0-32479-10487-3 |
| 10484 | 25 Lb Box | | 25 | 0-32479-10484-2 |
| 10484PB | 25 Lb Compressed Poly Bag | | 25 | 0-32479-10488-0 |
| 10485 | 50 Lb Box | | 50 | 0-32479-10485-9 |
| 10485PB | 50 Lb Compressed Poly Bag | | 50 | 0-32479-10489-7 |

WHITE SHEETS

| | | | | |
|---------|---------------------------|----|----|-----------------|
| 10460 | 4 Lb Box | | 4 | 0-32479-10460-6 |
| 10460PB | 4 Lb Compressed Poly Bag | 12 | 50 | 0-32479-11138-3 |
| 10462 | 5 Lb Box | | 5 | 0-32479-10462-0 |
| 10466 | 8 Lb Box | | 9 | 0-32479-11139-0 |
| 10466PB | 8 Lb Compressed Poly Bag | 6 | 51 | 0-32479-11140-6 |
| 10463 | 10 Lb Box | | 10 | 0-32479-10463-7 |
| 10463PB | 10 Lb Compressed Poly Bag | | 10 | 0-32479-10467-5 |
| 10464 | 25 Lb Box | | 25 | 0-32479-10464-4 |
| 10464PB | 25 Lb Compressed Poly Bag | | 25 | 0-32479-10468-2 |
| 10465 | 50 Lb Box | | 50 | 0-32479-10465-1 |
| 10465PB | 50 Lb Compressed Poly Bag | | 50 | 0-32479-10469-9 |

We also offer many white wipers not listed. Please inquire for more information.



RECYCLED WHITE CLOTH RAGS - Continued

| ITEM # | DESCRIPTION | QTY/CASE | CASE WT (LBS) | UPC NUMBER |
|-------------------------------|---------------------------|----------|---------------|-----------------|
| WHITE TURKISH TOWELING | | | | |
| 10590 | 4 Lb Box | | 4 | 0-32479-10590-0 |
| 10590PB | 4 Lb Compressed Poly Bag | 12 | 50 | 0-32479-11147-5 |
| 10592 | 5 Lb Box | | 5 | 0-32479-10592-4 |
| 10596 | 8 Lb Box | | 9 | 0-32479-11148-2 |
| 10596PB | 8 Lb Compressed Poly Bag | 6 | 51 | 0-32479-11149-9 |
| 10593 | 10 Lb Box | | 10 | 0-32479-10593-1 |
| 10593PB | 10 Lb Compressed Poly Bag | | 10 | 0-32479-10597-9 |
| 10594 | 25 Lb Box | | 25 | 0-32479-10594-8 |
| 10594PB | 25 Lb Compressed Poly Bag | | 25 | 0-32479-10598-6 |
| 10595 | 50 Lb Box | | 50 | 0-32479-10595-5 |
| 10595PB | 50 Lb Compressed Poly Bag | | 50 | 0-32479-10599-3 |
| WHITE FLANNEL | | | | |
| 10208 | 4 Lb Box | | 4 | 0-32479-11154-3 |
| 10208PB | 4 Lb Compressed Poly Bag | 12 | 51 | 0-32479-11155-0 |
| 10202 | 5 Lb Box | | 5 | 0-32479-10202-2 |
| 10209 | 8 Lb Box | | 9 | 0-32479-11156-7 |
| 10209PB | 8 Lb Compressed Poly Bag | 6 | 51 | 0-32479-11157-4 |
| 10203 | 10 Lb Box | | 10 | 0-32479-10203-9 |
| 10203PB | 10 Lb Compressed Poly Bag | | 10 | 0-32479-10207-7 |
| 10220 | 20 Lb Box | | 20 | 0-32479-10220-6 |
| 10204 | 25 Lb Box | | 25 | 0-32479-10204-6 |
| 10204PB | 25 Lb Compressed Poly Bag | | 25 | 0-32479-10208-4 |
| 10221 | 40 Lb Box | | 40 | 0-32479-10221-3 |
| 10205 | 50 Lb Box | | 50 | 0-32479-10205-3 |
| 10205PB | 50 Lb Compressed Poly Bag | | 50 | 0-32479-10209-1 |

NEW WHITE CLOTH RAGS

| ITEM # | DESCRIPTION | QTY/CASE | CASE WT (LBS) | UPC NUMBER |
|------------------------------------|---------------------------|----------|---------------|-----------------|
| RAG ROLL | | | | |
| 60201 | 1 Lb Roll | 10 | 11 | 0-32479-60201-0 |
| ULTIMATE FINE FINISH WIPERS | | | | |
| 12030 | 1 Lb Bag | 25 | 29 | 0-32479-12030-9 |
| 12031 | 2 Lb Bag | 10 | 20 | 0-32479-12031-6 |
| 12036 | 4 Lb Box | | 4 | 0-32479-12036-1 |
| 12036PB | 4 Lb Compressed Poly Bag | 12 | 51 | 0-32479-11126-0 |
| 12037 | 8 Lb Box | | 9 | 0-32479-12037-8 |
| 12037PB | 8 Lb Compressed Poly Bag | 6 | 51 | 0-32479-11127-7 |
| 12034 | 20 Lb Box | | 20 | 0-32479-12034-7 |
| 12039 | 25 Lb Box | | 25 | 0-32479-30029-9 |
| 12039PB | 25 Lb Compressed Poly Bag | | 25 | 0-32479-30051-0 |
| 12035 | 40 Lb Box | | 40 | 0-32479-12035-4 |
| 12048 | 50 Lb Box | | 50 | 0-32479-30047-3 |
| 12048PB | 50 Lb Compressed Poly Bag | | 50 | 0-32479-30045-9 |
| NEW BLEACHED KNITS | | | | |
| 60205 | 1/2 Lb Bag | 25 | 15 | 0-32479-60205-8 |
| 60200 | 1 Lb Bag | 25 | 29 | 0-32479-03005-9 |
| 12020 | 4 Lb Box | | 4 | 0-32479-12020-0 |
| 12020PB | 4 Lb Compressed Poly Bag | 12 | 51 | 0-32479-11124-6 |
| 12022 | 5 Lb Box | | 5 | 0-32479-12022-4 |
| 12026 | 8 Lb Box | | 9 | 0-32479-11116-1 |
| 12026PB | 8 Lb Compressed Poly Bag | 6 | 51 | 0-32479-11117-8 |
| 12023 | 10 Lb Box | | 10 | 0-32479-12023-1 |
| 12023PB | 10 Lb Compressed Poly Bag | | 10 | 0-32479-12027-9 |
| 12024 | 25 Lb Box | | 25 | 0-32479-12024-8 |
| 12024PB | 25 Lb Compressed Poly Bag | | 25 | 0-32479-12028-6 |
| 12025 | 50 Lb Box | | 50 | 0-32479-12025-5 |
| 12025PB | 50 Lb Compressed Poly Bag | | 50 | 0-32479-12029-3 |

We also offer many white wipers not listed. Please inquire for more information.

BUFFALO INDUSTRIES • TOLL-FREE: 800-683-0052

Recycled White Cloth Rags

(Continued)

White Turkish Toweling

All white, cotton turkish (terry) toweling looped on both sides. A highly absorbent product.

White Flannel

Medium-weight, low-linting, all white rag. Highly absorbent. Great for both durable and delicate applications.

New White Cloth Rags

Cloth rags are more durable than paper, cut in useable-sized pieces and are economical.

Rag Roll

New cotton rags. Large, white pieces of absorbent, heavy-weight t-shirt material. Super absorbent and low-linting.

Ultimate Fine Finish Wipers

Our best all new, white rag, used by craftsmen. 100% Cotton, white, smooth, heavy-weight, large-sized, knit wipers. Washed and bleached for superior absorbency, low-linting and uniform application of all coatings.

New Bleached Knits

High quality, heavy-weight t-shirt material. Washed and bleached for super absorbency and low-linting.



RECYCLED COLORED SWEATSHIRTS



Recycled Colored Cloth Rags

Made from 100% recycled materials. Cloth rags are more durable than paper, cut in useable-sized pieces and are economical.



Colored T-Shirts

Knit t-shirt material. Economical wiper suitable for almost all rag needs.

Colored Sweatshirts

Sweatshirt material graded for maximum absorbency and softness. Excellent all-purpose rag.

Colored Flannel

One of the best colored rags available. Highly absorbent with high cotton content and very soft.



Compressed Poly Bags

Approximately half the size of the equivalent weight box. Our 4, 8, 10, 25 and 50 pound sizes are pressure-packed in high-stretch, durable, clear poly film. Our 4 and 8 pound compressed bags are retail-ready with easy-carry handles.

RECYCLED COLORED CLOTH RAGS

| ITEM # | DESCRIPTION | QTY/CASE | CASE WT (LBS) | UPC NUMBER |
|-------------------------------|---------------------------|----------|---------------|-----------------|
| ♻️ COLORED T-SHIRTS | | | | |
| 10081 | 1 Lb Bag | 25 | 29 | 0-32479-10081-3 |
| 10080 | 4 Lb Box | | 4 | 0-32479-10080-6 |
| 10080PB | 4 Lb Compressed Poly Bag | 12 | 51 | 0-32479-11121-5 |
| 10082 | 5 Lb Box | | 5 | 0-32479-10082-0 |
| 10087 | 8 Lb Box | | 9 | 0-32479-11122-2 |
| 10087PB | 8 Lb Compressed Poly Bag | 6 | 51 | 0-32479-11123-9 |
| 10083 | 10 Lb Box | | 10 | 0-32479-10083-7 |
| 10083PB | 10 Lb Compressed Poly Bag | | 10 | 0-32479-10087-5 |
| 10084 | 25 Lb Box | | 25 | 0-32479-10084-4 |
| 10084PB | 25 Lb Compressed Poly Bag | | 25 | 0-32479-10088-2 |
| 10085 | 50 Lb Box | | 50 | 0-32479-10085-1 |
| 10085PB | 50 Lb Compressed Poly Bag | | 50 | 0-32479-10089-9 |
| ♻️ COLORED SWEATSHIRTS | | | | |
| 10060 | 4 Lb Box | | 4 | 0-32479-10060-8 |
| 10060PB | 4 Lb Compressed Poly Bag | 12 | 51 | 0-32479-11161-1 |
| 10062 | 5 Lb Box | | 5 | 0-32479-10062-2 |
| 10066 | 8 Lb Box | | 9 | 0-32479-11162-8 |
| 10066PB | 8 Lb Compressed Poly Bag | 6 | 51 | 0-32479-11163-5 |
| 10063 | 10 Lb Box | | 10 | 0-32479-10063-9 |
| 10063PB | 10 Lb Compressed Poly Bag | | 10 | 0-32479-10067-7 |
| 10064 | 25 Lb Box | | 25 | 0-32479-10064-6 |
| 10064PB | 25 Lb Compressed Poly Bag | | 25 | 0-32479-10068-4 |
| 10065 | 50 Lb Box | | 50 | 0-32479-10065-3 |
| 10065PB | 50 Lb Compressed Poly Bag | | 50 | 0-32479-10069-1 |
| ♻️ COLORED FLANNEL | | | | |
| 10180 | 4 Lb Box | | 4 | 0-32479-10180-3 |
| 10180PB | 4 Lb Compressed Poly Bag | 12 | 51 | 0-32479-11164-2 |
| 10182 | 5 Lb Box | | 5 | 0-32479-10182-7 |
| 10186 | 8 Lb Box | | 9 | 0-32479-11165-9 |
| 10186PB | 8 Lb Compressed Poly Bag | 6 | 51 | 0-32479-11167-3 |
| 10183 | 10 Lb Box | | 10 | 0-32479-10183-4 |
| 10183PB | 10 Lb Compressed Poly Bag | | 10 | 0-32479-10187-2 |
| 10184 | 25 Lb Box | | 25 | 0-32479-10184-1 |
| 10184PB | 25 Lb Compressed Poly Bag | | 25 | 0-32479-10188-9 |
| 10185 | 50 Lb Box | | 50 | 0-32479-10185-8 |
| 10185PB | 50 Lb Compressed Poly Bag | | 50 | 0-32479-10189-6 |

We also offer many colored wipers not listed. Please inquire for more information.



RECYCLED COLORED T-SHIRTS



RECYCLED COLORED TURKISH TOWELING



RECYCLED COLORED CLOTH RAGS - Continued

| ITEM # | DESCRIPTION | QTY/CASE | CASE WT (LBS) | UPC NUMBER |
|------------------------------------|---------------------------|----------|---------------|-----------------|
| ♻️ COLORED TURKISH TOWELING | | | | |
| 10580 | 4 Lb Box | | 4 | 0-32479-10580-1 |
| 10580PB | 4 Lb Compressed Poly Bag | 12 | 51 | 0-32479-11168-0 |
| 10582 | 5 Lb Box | | 5 | 0-32479-10582-5 |
| 10586 | 8 Lb Box | | 9 | 0-32479-11169-7 |
| 10586PB | 8 Lb Compressed Poly Bag | 6 | 51 | 0-32479-11170-3 |
| 10583 | 10 Lb Box | | 10 | 0-32479-10583-2 |
| 10583PB | 10 Lb Compressed Poly Bag | | 10 | 0-32479-10587-0 |
| 10584 | 25 Lb Box | | 25 | 0-32479-10584-9 |
| 10584PB | 25 Lb Compressed Poly Bag | | 25 | 0-32479-10588-7 |
| 10585 | 50 Lb Box | | 50 | 0-32479-10585-6 |
| 10585PB | 50 Lb Compressed Poly Bag | | 50 | 0-32479-10589-4 |
| ♻️ COLORED CORDUROY | | | | |
| 10100 | 4 Lb Box | | 4 | 0-32479-10100-1 |
| 10100PB | 4 Lb Compressed Poly Bag | 12 | 51 | 0-32479-11174-1 |
| 10102 | 5 Lb Box | | 5 | 0-32479-10102-5 |
| 10106 | 8 Lb Box | | 9 | 0-32479-11175-8 |
| 10106PB | 8 Lb Compressed Poly Bag | 6 | 51 | 0-32479-11176-5 |
| 10103 | 10 Lb Box | | 10 | 0-32479-10103-2 |
| 10103PB | 10 Lb Compressed Poly Bag | | 10 | 0-32479-10107-0 |
| 10104 | 25 Lb Box | | 25 | 0-32479-10104-9 |
| 10104PB | 25 Lb Compressed Poly Bag | | 25 | 0-32479-10108-7 |
| 10105 | 50 Lb Box | | 50 | 0-32479-10105-6 |
| 10105PB | 50 Lb Compressed Poly Bag | | 50 | 0-32479-10109-4 |
| ♻️ XL COLORED | | | | |
| 10560 | 4 Lb Box | | 4 | 0-32479-10560-3 |
| 10560PB | 4 Lb Compressed Poly Bag | 12 | 51 | 0-32479-11171-0 |
| 10562 | 5 Lb Box | | 5 | 0-32479-10562-7 |
| 10566 | 8 Lb Box | | 9 | 0-32479-11172-7 |
| 10566PB | 8 Lb Compressed Poly Bag | 6 | 51 | 0-32479-11173-4 |
| 10563 | 10 Lb Box | | 10 | 0-32479-10563-4 |
| 10563PB | 10 Lb Compressed Poly Bag | | 10 | 0-32479-10567-2 |
| 10564 | 25 Lb Box | | 25 | 0-32479-10564-1 |
| 10564PB | 25 Lb Compressed Poly Bag | | 25 | 0-32479-10568-9 |
| 10565 | 50 Lb Box | | 50 | 0-32479-10565-8 |
| 10565PB | 50 Lb Compressed Poly Bag | | 50 | 0-32479-10569-6 |

We also offer many colored wipers not listed. Please inquire for more information.

BUFFALO INDUSTRIES • TOLL-FREE: 800-683-0052

Recycled Colored Cloth Rags

(Continued)

Colored Turkish Toweling

Cotton turkish (terry) toweling looped on both sides. A highly absorbent product.

Colored Corduroy

Corduroy pant material. Excellent lower cost rag.

XL Colored

Medium-weight cotton and cotton/synthetic blends consisting of dress pant and shirt material.





Food Service & Janitorial Color Striped Bar Towels: Blue, Green & Gold

Highly absorbent and durable for cleaning, wiping and mopping. Heavy-duty, low-linting, machine washable. Ideal for stainless steel, tile, granite, laminate, glass, porcelain and wood.

Size: 16" x 19" Fully hemmed

Material: 100% Cotton

Ribbed Bar Towels

Ribbed for janitorial and restaurant applications.

Absorbent, low-linting, machine washable.

Cost-effective for heavy-duty cleaning, dusting and polishing.

Size: 16" x 19" Fully hemmed

Material: 100% Cotton

Full Terry Bar Towels

Medium weight, full terry towel for janitorial and restaurant applications. Absorbent, low linting, machine washable.

All white towel for heavy-duty cleaning, dusting and polishing.

Size: 16" x 19" Fully hemmed

Material: 100% Cotton

Grade B Bar Towels

Combination pack of all new, white terry towels and color striped towels with slight manufacturing imperfections. For janitorial and restaurant applications. Absorbent, low linting, machine washable. Aggressively-priced cleaning towels for heavy-duty cleaning, dusting and polishing.

Size: 16" x 19" Fully hemmed

Material: 100% Cotton

Huck Towels

Surgical-style, 100% cotton huck towels.

Low-linting, durable, highly absorbent and colorfast blue.

Machine washable.

Size: 16" x 23" Fully hemmed

Material: 100% Cotton

FOOD SERVICE & JANITORIAL COLOR STRIPED BAR TOWELS: BLUE, GREEN & GOLD

| ITEM # | DESCRIPTION | QTY/CASE | CASE WT (LBS) | UPC NUMBER |
|---------|--------------------------|----------|---------------|-----------------|
| 60224 | Blue, 12 Pk Bagged Roll | 12 | 26 | 0-32479-60224-9 |
| 60211BK | Blue, Bulk Pk Bale | 1200 | 190 | |
| 60213 | Green, 12 Pk Bagged Roll | 12 | 26 | 0-32479-60213-3 |
| 60214BK | Green, Bulk Pk Bale | 1200 | 190 | |
| 60280 | Gold, 12 Pk Bagged Roll | 12 | 26 | 0-32479-60280-5 |
| 60280BK | Gold, Bulk Pk Bale | 1200 | 190 | |

RIBBED BAR TOWELS

| ITEM # | DESCRIPTION | QTY/CASE | CASE WT (LBS) | UPC NUMBER |
|---------|-------------------|----------|---------------|-----------------|
| 60209 | 12 Pk Bagged Roll | 25 | 41 | 0-32479-60209-6 |
| 60215BK | Bulk Pk Bale | 1200 | 155 | |

FULL TERRY BAR TOWELS

| ITEM # | DESCRIPTION | QTY/CASE | CASE WT (LBS) | UPC NUMBER |
|--------|-------------------|----------|---------------|-----------------|
| 60243 | 12 Pk Bagged Roll | 25 | 35 | 0-32479-60243-0 |

GRADE B BAR TOWELS

| ITEM # | DESCRIPTION | QTY/CASE | CASE WT (LBS) | UPC NUMBER |
|---------|---------------------------|----------|---------------|-----------------|
| 12049 | 1 Lb Bag | 25 | 27 | 0-32479-12049-1 |
| 12051 | 2 Lb Bag | 10 | 22 | 0-32479-02051-7 |
| 12050 | 4 Lb Box | | 4 | 0-32479-12050-7 |
| 12050PB | 4 Lb Compressed Poly Bag | 12 | 51 | 0-32479-11190-1 |
| 12052 | 5 Lb Box | | 5 | 0-32479-12052-1 |
| 12057 | 8 Lb Box | | 9 | 0-32479-11192-5 |
| 12057PB | 8 Lb Compressed Poly Bag | 6 | 51 | 0-32479-11193-2 |
| 12053 | 10 Lb Box | | 10 | 0-32479-12053-8 |
| 12053PB | 10 Lb Compressed Poly Bag | | 10 | 0-32479-12057-6 |
| 12054 | 25 Lb Box | | 25 | 0-32479-12054-5 |
| 12054PB | 25 Lb Compressed Poly Bag | | 25 | 0-32479-12058-3 |
| 12055 | 50 Lb Box | | 50 | 0-32479-12055-2 |
| 12055PB | 50 Lb Compressed Poly Bag | | 50 | 0-32479-12059-0 |

HUCK TOWELS

| ITEM # | DESCRIPTION | QTY/CASE | CASE WT (LBS) | UPC NUMBER |
|---------|---------------------------|----------|---------------|-----------------|
| 10201 | 4 Lb Box | | 4 | 0-32479-10201-5 |
| 10201PB | 4 Lb Compressed Poly Bag | 12 | 51 | 0-32479-00201-8 |
| 10211 | 5 Lb Box | | 5 | 0-32479-12062-0 |
| 10212 | 8 Lb Box | | 9 | 0-32479-10222-0 |
| 10212PB | 8 Lb Compressed Poly Bag | 6 | 51 | 0-32479-10224-4 |
| 10206 | 10 Lb Box | | 10 | 0-32479-10211-4 |
| 10206PB | 10 Lb Compressed Poly Bag | | 10 | 0-32479-10206-0 |
| 10207 | 25 Lb Box | | 25 | 0-32479-10212-1 |
| 10207PB | 25 Lb Compressed Poly Bag | | 25 | 0-32479-00212-4 |
| 10210 | 50 Lb Box | | 50 | 0-32479-10223-7 |
| 10210PB | 50 Lb Compressed Poly Bag | | 50 | 0-32479-10210-7 |



TERRY TOWELS

TERRY TOWELS

| ITEM # | DESCRIPTION | QTY/CASE | CASE WT (LBS) | UPC NUMBER |
|--------|-------------|----------|---------------|-----------------|
| 60229C | 3 Pk Roll | 30 | 12 | 0-32479-03335-7 |
| 60225 | 4 Pk Bag | 50 | 25 | 0-32479-03333-3 |
| 60220 | 12 Pk Bag | 15 | 23 | 0-32479-03331-9 |
| 60221 | 24 Pk Bag | 10 | 29 | 0-32479-03336-4 |
| 60227 | Bulk Pk Box | 200 | 25 | 0-32479-60227-0 |

JANITORIAL TERRY TOWELS

| ITEM # | DESCRIPTION | QTY/CASE | CASE WT (LBS) | UPC NUMBER |
|--------|-------------|----------|---------------|-----------------|
| 60246 | 12 Pk Bag | 15 | 23 | 0-32479-60246-1 |

MARINE TERRY TOWELS

| ITEM # | DESCRIPTION | QTY/CASE | CASE WT (LBS) | UPC NUMBER |
|--------|-------------|----------|---------------|-----------------|
| 60248 | 3 Pk Roll | 50 | 19 | 0-32479-60248-5 |
| 60244 | 6 Pk Bag | 25 | 19 | 0-32479-60244-7 |
| 60249 | 12 Pk Bag | 15 | 23 | 0-32479-60249-2 |

WHITE HALF TOWELS

| ITEM # | DESCRIPTION | QTY/CASE | CASE WT (LBS) | UPC NUMBER |
|---------|---------------------------|----------|---------------|-----------------|
| 10815 | 8 Lb Box | | 9 | 0-32479-10815-4 |
| 10815PB | 8 Lb Compressed Poly Bag | | 51 | 0-32479-10824-6 |
| 10816 | 10 Lb Box | | 10 | 0-32479-10816-1 |
| 10816PB | 10 Lb Compressed Poly Bag | | 10 | 0-32479-10825-3 |
| 10818 | 25 Lb Box | | 25 | 0-32479-10818-5 |
| 10818PB | 25 Lb Compressed Poly Bag | | 25 | 0-32479-10826-0 |
| 10821 | 50 Lb Box | | 50 | 0-32479-10821-5 |
| 10821PB | 50 Lb Compressed Poly Bag | | 50 | 0-32479-10827-7 |



Terry Towels

Very absorbent and ideal for all-purpose cleaning, polishing and detailing. Can be used around the home and garage. Machine washable.

Size: 14" x 17" Fully hemmed

Material: 100% Cotton

Janitorial Terry Towels

Ideally suited for all residential and aggressive commercial cleaning operations. Machine washable.

Size: 14" x 17" Fully hemmed

Material: 100% Cotton

Marine Terry Towels

Very absorbent and ideal for cleaning hulls, decks, galleys and heads. Machine washable.

Size: 14" x 17" Fully hemmed

Material: 100% Cotton

White Half Towels

Extra large, heavyweight, plush, recycled, terry cloth half bath towels. For drying large surfaces, detailing, polishing, buffing, cleaning. Very absorbent and colorfast. Machine washable.

Size: Approximately 24" x 24"

Material: 100% Cotton



MICROFIBER CLEANING CLOTHS



Microfiber Cleaning Cloths

Ultra absorbent, super gentle, premium cloths for cleaning and polishing without chemicals. Ultra-fine fibers act like dirt magnets to clean and polish fine finishes, glass, polished and plated metals, lenses, electronics, appliances and furniture. Safe for most surfaces. Machine washable.

Advanced-technology microfibers are hundreds of times smaller than a human hair. They have thousands of small fibers which lift and carry dirt particles away from fine surfaces. The fibers are knitted into thousands of loops in a cloth that is ultra-absorbent, easily absorbing many times its weight in fluids. Available in multiple sizes to address different tasks.

Colors are blue, green and yellow, except as noted.

Sizes: 12" x 12"
12" x 16"
16" x 16"
20" x 20"

Material: 80% Polyester/20% polyamide microfiber

Microfiber Detail Towels

Extra plush, supersized, very absorbent. Ideal for drying and detailing large surfaces. Yellow, 20" x 20".

12" x 12" MICROFIBER CLEANING CLOTHS

| ITEM # | DESCRIPTION | QTY/CASE | CASE WT (LBS) | UPC NUMBER |
|--------|---------------------------|----------|---------------|-----------------|
| 64000 | Blue, 3 Pk Bag | 30 | 7 | 0-32479-64000-5 |
| 65102 | Blue, 25 Pk Dispenser Box | 4 | 6 | 0-32479-65102-5 |

12" x 16" MICROFIBER CLEANING CLOTHS

| ITEM # | DESCRIPTION | QTY/CASE | CASE WT (LBS) | UPC NUMBER |
|--------|--|----------|---------------|-----------------|
| 65001 | Blue, 3 Pk Roll | 30 | 10 | 0-32479-65001-1 |
| 65101 | Green, ECONOMY, 3 Pk Roll | 50 | 15 | 0-32479-65101-8 |
| 65100 | Blue, ECONOMY, 12 Pk Bag | 20 | 15 | 0-32479-65100-1 |
| 65003 | 4 Each of Blue, Green, Yellow, 12 Pk Bag | 20 | 23 | 0-32479-65003-5 |

16" x 16" MICROFIBER CLEANING CLOTHS

| ITEM # | DESCRIPTION | QTY/CASE | CASE WT (LBS) | UPC NUMBER |
|--------|--------------------------------|----------|---------------|-----------------|
| 65002 | 3 Blue, 2 Yellow, 5 Pk Flat Pk | 15 | 10 | 0-32479-65002-8 |
| 64003 | Blue, 12 Pk Bag | 12 | 18 | 0-32479-64003-6 |
| 64009 | Blue, Bulk Pk Box | 20 | 3 | 0-32479-30043-5 |
| 64006 | Blue, Bulk Pk Box | 50 | 6 | 0-32479-11207-6 |
| 64008 | Blue, Bulk Pk Box | 250 | 30 | 0-32479-64008-1 |
| 64004 | Green, Bulk Pk Box | 250 | 30 | 0-32479-64004-3 |

20" x 20" MICROFIBER DETAIL TOWELS

| ITEM # | DESCRIPTION | QTY/CASE | CASE WT (LBS) | UPC NUMBER |
|--------|---------------------------|----------|---------------|-----------------|
| 65004 | Yellow, Detail Towel 2 Pk | 15 | 8 | 0-32479-65004-2 |
| 65013 | Yellow, Bulk Pk Box | 15 | 3 | 0-32479-30042-8 |



FLANNEL DUST CLOTHS



DIAPER CLOTHS



Multi-Purpose Cleaning Cloths

Convenient Value Pack roll of 50 cloths. Durable and disposable cloths. Stronger than paper towels. Soft and lint-free. Clean hands, tools and equipment.

Size: Perforated 8" x 15" edgeless wipes

Material: Spun, synthetic fiber

New Pre-Washed Diaper Cloths

100% High-quality cotton cloth made for the most important dusting, polishing and detailing jobs.

Classic three-panel construction.

Size: 14" x 21" Fully hemmed

Material: 100% Cotton

Marine Diaper Cloths

Pre-washed for maximum absorbency. Super soft, marine-grade Diaper Cloths made of high-quality cotton.

Ideal for polishing brass, stainless steel and aluminum.

Classic three-panel construction. Machine washable.

Size: 14" x 20" Fully hemmed

Material: 100% Cotton

Flannel Dust Cloths

100% Cotton flannel material, won't mar or scratch fine surfaces. Ideal for automotive and household dusting, polishing and cleaning. Machine washable.

Size: 13" x 24" Fully hemmed

Material: 100% Cotton

Glass Towels

100% cotton, ideal low-linting, non-streaking product for windows, mirrors, glassware and other surfaces.

Machine washable.

Size: 18" x 18" Fully hemmed

Material: 100% Cotton

Janitorial Glass Towels

Commercial-grade 100% cotton, low-linting, non-streaking product for cleaning restrooms, offices and kitchens.

Machine washable.

Size: 18" x 18" Fully hemmed

Material: 100% Cotton

MULTI-PURPOSE CLEANING CLOTHS

| ITEM # | DESCRIPTION | QTY/CASE | CASE WT (LBS) | UPC NUMBER |
|--------|---------------|----------|---------------|-----------------|
| 14006 | 50 Cloth Roll | 12 | 7 | 0-32479-14006-2 |

NEW PRE-WASHED DIAPER CLOTHS

| ITEM # | DESCRIPTION | QTY/CASE | CASE WT (LBS) | UPC NUMBER |
|--------|-------------|----------|---------------|-----------------|
| 63015 | 25 Lb Box | | 25 | 0-32479-63015-0 |

MARINE DIAPER CLOTHS

| ITEM # | DESCRIPTION | QTY/CASE | CASE WT (LBS) | UPC NUMBER |
|--------|-------------|----------|---------------|-----------------|
| 63036 | 3 Pk Roll | 40 | 21 | 0-32479-63036-5 |

FLANNEL DUST CLOTHS

| ITEM # | DESCRIPTION | QTY/CASE | CASE WT (LBS) | UPC NUMBER |
|--------|-------------|----------|---------------|-----------------|
| 60237C | 3 Pk Bag | 50 | 12 | 0-32479-60237-9 |
| 60235 | 12 Pk Bag | 20 | 19 | 0-32479-07411-4 |
| 60230 | Bulk Pk Box | 350 | 27 | 0-32479-60230-0 |

GLASS TOWELS

| ITEM # | DESCRIPTION | QTY/CASE | CASE WT (LBS) | UPC NUMBER |
|---------|-------------|----------|---------------|-----------------|
| 63100HB | 4 Pk Bag | 12 | 5 | 0-32479-63100-3 |



SHOP TOWELS



Shop Towels (Red)

Economical grease and oil rag for the home or shop.

Washed, dyed and dried to ensure a quality product.

Size: 13" x 14" Fully hemmed

Material: 100% Cotton

Marine Shop Towels (White)

Bleached white. Ideal for engine work, hydraulic repairs and general maintenance. Color-free and durable. Will not bleed.

Size: 13" x 14" Fully hemmed

Material: 100% Cotton

Painter's Towels (White)

Bleached white and used where a colorfast towel is required.

Washing and bleaching ensure an absorbent towel. Will not bleed.

Size: 13" x 14" Fully hemmed

Material: 100% Cotton

Recycled Shop Towels (Colors Vary)

Economical grease and oil rag for auto, garage and home. Colors may vary.

Size: Sizes vary. Fully hemmed

Material: 100% Cotton



SHOP TOWELS - Red

| ITEM # | DESCRIPTION | QTY/CASE | CASE WT (LBS) | UPC NUMBER |
|--------|-------------|----------|---------------|-----------------|
| 62006C | 5 Pk Roll | 50 | 16 | 0-32479-02331-0 |
| 62010C | 10 Pk Bag | 25 | 16 | 0-32479-02391-4 |
| 62013C | 25 Pk Bag | 10 | 16 | 0-32479-02311-2 |
| 62017 | 50 Pk Bag | 10 | 33 | 0-32479-02361-7 |
| 62030C | Bulk Pk Box | 250 | 16 | 0-32479-62030-4 |
| 62000 | Bulk Pk Box | 500 | 30 | 0-32479-62000-7 |

MARINE SHOP TOWELS - White

| ITEM # | DESCRIPTION | QTY/CASE | CASE WT (LBS) | UPC NUMBER |
|--------|-------------|----------|---------------|-----------------|
| 62023 | 7 Pk Roll | 50 | 22 | 0-32479-62023-6 |
| 62031C | 25 Pk Bag | 10 | 16 | 0-32479-62031-1 |

PAINTER'S TOWELS - White

| ITEM # | DESCRIPTION | QTY/CASE | CASE WT (LBS) | UPC NUMBER |
|--------|-------------|----------|---------------|-----------------|
| 62016C | 5 Pk Roll | 50 | 16 | 0-32479-62016-8 |
| 62018C | 25 Pk Bag | 10 | 16 | 0-32479-62018-2 |

RECYCLED SHOP TOWELS - Colors Vary

| ITEM # | DESCRIPTION | QTY/CASE | CASE WT (LBS) | UPC NUMBER |
|--------|-------------|----------|---------------|-----------------|
| 62011 | 1 Lb Bag | 25 | 27 | 0-32479-02311-2 |



Applicator Pads

Terry Applicator Pads

Great for smooth and consistent application of waxes, stains, polishes and protectants. Easy to use and reusable. Hand washable in soapy water.

Size: 5" diameter

Material: White cotton cover over foam pad

Microfiber Applicator Pads

Apply waxes, polishes, protectants and dressings. Great for smooth and consistent application. Will not scratch. Safe for clearcoat. Hand washable in soapy water.

Size: 6" diameter

Material: Yellow microfiber cover over foam pad

Tack Cloths

Ultimate Microfiber Tack Cloths

Rely on ultra-fine microfibers to pick up particles, unlike traditional resin-coated tack cloths. Remove dust for better adhesion of paints, stains and varnishes. Clean wood, metal, fiberglass, plaster and other materials. No waxy residue. Hand washable in soapy water and reusable.

Available in yellow.

Size: Fully hemmed, 12" x 12"

Material: 80% Polyester/20% polyamide microfiber

Cotton Tack Cloths

Clean wood, metal, fiberglass, plaster and other materials. Designed to remove dust for better adhesion of paints, stains and varnishes.

Size: 18" x 36"

Color: Cotton, resin-coated. Available in white and tan

Cheese Cloth

Low-linting, ideal for polishing, painting, cleaning and cooking. 2 Square yard pack is the perfect size for many applications.

Size: 2 Square yards

Material: 100% Cotton

Combo Sponges

Heavy-duty. Two sponges in one. Super soft microfiber front cleans painted surfaces & metals. Durable scrubbing back cleans auto grills and bumpers, boat hulls and decks.

Size: 9" x 4.75" x 2"

Material: Microfiber & polyester mesh covering a sponge interior

Wash Mitts

Synthetic Wool Wash Mitts

Effectively clean marine, auto and household surfaces. Large cleaning surface. Elastic wristband. Hand washable.

Size: One size fits all

Material: Acrylic fleece, elastic

Microfiber Chenille Wash Mitts

Gentle microfiber fingers deep-clean both flat and irregular surfaces. Ideal for marine, auto and household use. Elastic wristband. Hand washable.

Size: One size fits all

Material: Microfiber, elastic, blue

Moving Pads

Jumbo-sized, heavy-duty moving pad. Thick padding makes it ideal for car trunks and SUV cargo areas, as well as an emergency ground cloth, fender or seat cover. Quilted, with bound edges. Machine washable.

Size: 72" x 80"

Material: Edge-bound polypropylene filling & covering

APPLICATOR PADS

| ITEM # | DESCRIPTION | QTY/CASE | CASE WT (LBS) | UPC NUMBER |
|--------|---------------------|----------|---------------|-----------------|
| 64011 | Terry 2 Pk Bag | 24 | 2 | 0-32479-64011-1 |
| 64012 | Terry 4 Pk Bag | 12 | 2 | 0-32479-64012-8 |
| 65025 | Microfiber 2 Pk Bag | 24 | 3 | 0-32479-65025-7 |

TACK CLOTHS

| ITEM # | DESCRIPTION | QTY/CASE | CASE WT (LBS) | UPC NUMBER |
|--------|---|----------|---------------|-----------------|
| 65008 | Ultimate Microfiber 2 Pk Poly Bag (12 Bags per inner case; 6 inner cases per master case.) | 72 | 10 | 0-32479-65008-0 |
| 68530 | White Cotton 1 Pk Bag (12 Bags per inner case; 12 inner cases per master case.) | 144 | 7 | 0-32479-68530-3 |
| 68531 | Tan Cotton 1 Pk Bag (12 Bags per inner case; 12 inner cases per master case.) | 144 | 7 | 0-32479-68531-0 |

CHEESE CLOTH

| ITEM # | DESCRIPTION | QTY/CASE | CASE WT (LBS) | UPC NUMBER |
|--------|------------------------|----------|---------------|-----------------|
| 68581 | 2 Square Yards per Bag | 50 | 3 | 0-32479-68581-5 |

COMBO SPONGES

| ITEM # | DESCRIPTION | QTY/CASE | CASE WT (LBS) | UPC NUMBER |
|--------|---------------------|----------|---------------|-----------------|
| 65005 | 1 Pk Hanging Header | 25 | 5 | 0-32479-65005-9 |

WASH MITTS

| ITEM # | DESCRIPTION | QTY/CASE | CASE WT (LBS) | UPC NUMBER |
|--------|---|----------|---------------|-----------------|
| 68570 | Synthetic Wool 1 Pk Hanging Header | 25 | 7 | 0-32479-68570-9 |
| 68573 | Microfiber Chenille 1 Pk Hanging Header | 25 | 11 | 0-32479-68573-0 |

MOVING PADS

| ITEM # | DESCRIPTION | QTY/CASE | CASE WT (LBS) | UPC NUMBER |
|--------|-------------|----------|---------------|-----------------|
| 69005 | 1 Pk Bag | 6 | 27 | 0-32479-09979-7 |



Each SURLY Soap has a scrubber inside, great for hands and safe for forearms.



SURLY Soap

Soap with Attitude™
Medium scour power.

SURLY Soap is the most innovative hand soap for removing paint, dirt and grease. This powerful cleansing soap has a scrubbing pad embedded in it, combining grease-cutting and dirt-scouring in one soap. The more you use it, the more the scrubber is revealed. Bars have built-in finger rails.

SURLY Bars

Each Bar Size: 7.5 oz., 3.625 x 2.625 x 1.125"

SURLY Minis

Experience SURLY Soap Mini's powerful scrubbing action on-the-go and leave work behind.

Each Mini Size: .7 oz., 1.75 x 1.75 x .375"

SURLY BARS - Counter POP Display Boxes

| ITEM # | DESCRIPTION | QTY/CASE | CASE WT (LBS) | UPC NUMBER |
|--------|---|----------|---------------|-----------------|
| 14055 | MEDIUM SCOUR POWER Bars, 6 Pack (6 Bars per Inner Case; 4 Inner Cases per Master Case) | 24 | 13 | 8-68065-00044-7 |

SURLY MINI - Counter POP Display Boxes

| ITEM # | DESCRIPTION | QTY/CASE | CASE WT (LBS) | UPC NUMBER |
|--------|---|----------|---------------|-----------------|
| 14069 | MEDIUM SCOUR POWER Minis, 12 Pack (12 MINIs per Inner Case; 3 Inner Cases per Master Case) | 36 | 3 | 8-68065-00043-0 |



DISPOSABLE COVERALLS
Non-hooded without Boots



DISPOSABLE COVERALLS
Hooded without Boots



DISPOSABLE COVERALLS
Hooded with Boots



MICROPOROUS COVERALLS

| ITEM # | DESCRIPTION | QTY/CASE | CASE WT (LBS) | UPC NUMBER |
|--------|-----------------------------|----------|---------------|-----------------|
| 68254 | Size L, HOODED - 1 Pk Bag | 25 | 12 | 0-32479-68254-8 |
| 68255 | Size XL, HOODED - 1 Pk Bag | 25 | 13 | 0-32479-68255-5 |
| 68256 | Size 2XL, HOODED - 1 Pk Bag | 25 | 14 | 0-32479-68256-2 |
| 68257 | Size 3XL, HOODED - 1 Pk Bag | 25 | 14 | 0-32479-68257-9 |

SMS COVERALLS

| ITEM # | DESCRIPTION | QTY/CASE | CASE WT (LBS) | UPC NUMBER |
|--------|--|----------|---------------|-----------------|
| 68527 | Size L, NON-HOODED - 1 Pk Bag | 25 | 10 | 0-32479-68527-3 |
| 68528 | Size XL, NON-HOODED - 1 Pk Bag | 25 | 11 | 0-32479-68528-0 |
| 68524 | Size 2XL, NON-HOODED - 1 Pk Bag | 25 | 11 | 0-32479-68524-2 |
| 68522 | Size 3XL, NON-HOODED - 1 Pk Bag | 25 | 12 | 0-32479-68522-8 |
| 68525 | Size L, HOODED - 1 Pk Bag | 25 | 11 | 0-32479-68525-9 |
| 68526 | Size XL, HOODED - 1 Pk Bag | 25 | 11 | 0-32479-68526-6 |
| 68523 | Size 2XL, HOODED - 1 Pk Bag | 25 | 12 | 0-32479-68523-5 |
| 68520 | Size 3XL, HOODED - 1 Pk Bag | 25 | 12 | 0-32479-68520-4 |
| 68441 | Size L, HOODED WITH BOOTS - 1 Pk Bag | 12 | 8 | 0-32479-68441-2 |
| 68442 | Size XL, HOODED WITH BOOTS - 1 Pk Bag | 12 | 8 | 0-32479-68442-9 |
| 68443 | Size 2XL, HOODED WITH BOOTS - 1 Pk Bag | 12 | 8 | 0-32479-68443-6 |
| 68444 | Size 3XL, HOODED WITH BOOTS - 1 Pk Bag | 12 | 8 | 0-32479-68444-3 |

POLYPRO COVERALLS

| ITEM # | DESCRIPTION | QTY/CASE | CASE WT (LBS) | UPC NUMBER |
|--------|-----------------------------|----------|---------------|-----------------|
| 68510 | Size L, HOODED - 1 Pk Bag | 12 | 5 | 0-32479-68510-5 |
| 68509 | Size XL, HOODED - 1 Pk Bag | 12 | 5 | 0-32479-68509-9 |
| 68508 | Size 2XL, HOODED - 1 Pk Bag | 12 | 5 | 0-32479-68508-2 |
| 68507 | Size 3XL, HOODED - 1 Pk Bag | 12 | 6 | 0-32479-68507-5 |

SPRAY SOCKS

| ITEM # | DESCRIPTION | QTY/CASE | CASE WT (LBS) | UPC NUMBER |
|--------|---|----------|---------------|-----------------|
| 68580 | 1 Pk Bag (10 bags per inner case; 10 inner cases per master case.) | 100 | 8 | 0-32479-68580-8 |

Microporous Coveralls

Specialized lamination process allows maximum breathability while offering a high level of protection from varnishes, resins, fiberglass, paints and sanding dust. These chemical resistant coveralls offer a two-way zippered front, elastic wrists, ankles and waist, plus convenient front and back pockets. A cost-effective alternative to Tyvek®.

Sizes: L 42-44, XL 46-48, 2XL 50-52, 3XL 54-56
(Available in hooded only.)

Material: Polyethylene-laminated polypropylene

SMS Coveralls

Contractor-grade, 3-layer SMS offers an ideal combination of breathability and protection from paint and particulates. SMS material guards against liquids, sprays, powders, fiberglass and sanding dust. Zip-front, elastic wrists, ankles and waist.

Sizes: L 42-44, XL 46-48, 2XL 50-52, 3XL 54-56
(Non-hooded have one-way zipper and no pockets. Hooded and hooded-with-boots have two-way zippers and front and back pockets.)

Material: 3-Layer laminated polypropylene

Polypro Coveralls

Economy-grade paint and particulate barrier. Lightweight protection against liquids, sprays, powders and sanding dust. Zip-front, collar, elastic wrists, ankles and waist.

Sizes: L 42-44, XL 46-48, 2XL 50-52, 3XL 54-56
(Available in hooded only.)

Material: Polypropylene

Spray Socks

Redesigned to provide better protection for face and neck. Protect head from paint, resin, overspray and other materials. Fits snugly around face. Extra long neck. Fully hemmed.

Size: One size fits all
Material: Poly/cotton blend



XL ECONOMY SHOE & BOOT COVERS



XL WATERPROOF SHOE & BOOT COVERS



XL SHOE & BOOT COVERS AND DISPOSABLE COVERALLS

Disposable Shoe & Boot Covers

Buffalo offers two disposable, size XL Shoe and Boot Covers for construction, paint, plumbing, marine, HVAC & MRO.

Shoe and Boot Covers protect both footwear and flooring against dirt, varnish, resins, fiberglass, paints and most liquids, depending on the cover selected.

Materials range from economy covers, to heavy, waterproof material. Styles area low-profile XL Shoe and Boot Covers, accommodating all shoes and boots up to size 18.

Please contact us for assistance in selecting the right Shoe and Boot Covers for your needs.

XL Economy Shoe & Boot Covers

Lightweight, durable spun fiber material offers a reliable protective covering. **Low-profile**, extra large size to fit over size 18 work boots. Elastic top and bottom for a secure fit.

XL Waterproof Shoe & Boot Covers

Heavy-duty water barrier in flooded situations. Durable, textured, plastic material. **Low-profile**, extra large size to fit over size 18 work boots. Elastic top and bottom for a secure fit.



DISPOSABLE SHOE & BOOT COVERS

| ITEM # | DESCRIPTION | QTY/CASE | CASE WT (LBS) | UPC NUMBER |
|--------|--|----------|---------------|-----------------|
| 68437 | XL Economy Shoe & Boot Covers, 3 Pairs per Bag | 25 | 5 | 0-32479-68437-5 |
| 68401 | XL Economy Shoe & Boot Covers, 10 Pairs per Bag (4 Bags per inner case; 4 inner cases per master case.) | 16 | 11 | 0-32479-80017-1 |
| 68402 | XL Economy Shoe & Boot Covers, 50 Pairs per Box | 4 | 10 | 0-32479-80018-8 |
| 68403 | XL Waterproof Shoe & Boot Covers, 10 Pairs per Bag (4 Bags per inner case; 4 inner cases per master case.) | 16 | 10 | 0-32479-68403-0 |
| 68404 | XL Waterproof Shoe & Boot Covers, 40 Pairs per Box | 4 | 11 | 0-32479-68404-7 |



OIL-ONLY SORBENT PADS & SOCK

OIL-ONLY RETAIL SORBENT SOCKS - Oil-Only, White

| ITEM # | DESCRIPTION | QTY/CASE | CASE WT (LBS) | UPC NUMBER |
|--------|---|----------|---------------|-----------------|
| 90900 | Meltblown Socks 3" x 4' (Retail Packaging.) | 30 | 25 | 0-32479-90900-3 |

OIL-ONLY RETAIL SORBENT PADS - Oil-Only, White, Bonded

| ITEM # | DESCRIPTION | QTY/CASE | CASE WT (LBS) | UPC NUMBER |
|--------|---|----------|---------------|-----------------|
| 90700 | Lightweight, Meltblown Pads 5 Pk Roll 15" x 18" (Retail Packaging.) | 20 | 12 | 0-32479-90700-9 |

OIL-ONLY RETAIL BILGE BOOMS - Oil-Only, White

| ITEM # | DESCRIPTION | QTY/CASE | CASE WT (LBS) | UPC NUMBER |
|--------|--|----------|---------------|-----------------|
| 90400 | Small Bilge Oil Booms 5" x 15" (Retail Packaging.) | 20 | 18 | 0-32479-90400-8 |
| 90405 | Large Bilge Oil Booms 8" x 18" (Retail Packaging.) | 12 | 19 | 0-32479-90405-3 |

Oil-Only Retail Sorbent Socks

Oil-only sorbents absorb oil, fuel and hydraulic fluid. Will not absorb water. Ideal for bilges, sumps, drains and basins. Easy to store and use. Lint-free. Won't shed. Absorbs up to 1.3 gallons of oil-based fluids.

Size: 3" x 4"

Material: 100% Polypropylene fill

Oil-Only Retail Sorbent Pads

Oil-only sorbents absorb oil, fuel and hydraulic fluid. Will not absorb water. Ideal for engines, hydraulic systems, holding tanks and catch basins. Easy to store and use. Five Pads absorb up to 1 gallon of oil-based fluids.

Size: 15" x 18"

Material: 100% Polypropylene

Oil-Only Retail Bilge Booms

Oil-only sorbents absorb oil, fuel and hydraulic fluid. Will not absorb water. Ideal for bilges, sumps, drains and basins. Easy to store and use. Lint-free. Won't shed.

Small Bilge Oil Booms

Absorb up to 1.2 gallons of oil-based fluids.

Size: 5" x 15"

Material: 100% Polypropylene fill

Large Bilge Oil Booms

Absorb up to 2.8 gallons of oil-based fluids.

Size: 8" x 18"

Material: 100% Polypropylene fill



PADS - Oil-Only - Meltblown



ROLLS - Oil-Only - Meltblown



BOOMS - Oil-Only



SOCKS - Oil-Only

PADS - Oil-Only, White

| ITEM # | DESCRIPTION | QTY/CASE | CASE WT (LBS) | UPC NUMBER |
|---|--|----------|---------------|-----------------|
| PADS - OIL-ONLY - MELTBLOWN PADS | | | | |
| 90968 | Oil-Only Economy Lightweight 15" x 18" | 100 | 7 | 0-32479-90968-3 |
| 90851 | Oil-Only Lightweight 15" x 18" | 200 | 12 | 0-32479-90851-8 |
| 90904 | Oil-Only Medium Weight 15" x 18" | 100 | 9 | 0-32479-90904-1 |
| 90850 | Oil-Only Heavy Weight 15" x 18" | 100 | 10 | 0-32479-90850-1 |

PADS - OIL-ONLY - BONDED

| | | | | |
|-------|------------------------------------|-----|----|-----------------|
| 90813 | Oil-Only Lightweight 15" x 18" * | 200 | 12 | 0-32479-90813-6 |
| 90820 | Oil-Only Medium Weight 15" x 18" * | 100 | 9 | 0-32479-90820-4 |
| 90811 | Oil-Only Heavy Weight 15" x 18" * | 100 | 10 | 0-32479-90811-2 |

PADS - OIL-ONLY - LAMINATED

| | | | | |
|-------|------------------------------------|-----|----|-----------------|
| 90823 | Oil-Only Medium Weight 15" x 18" * | 100 | 9 | 0-32479-90823-5 |
| 90822 | Oil-Only Heavy Weight 15" x 18" * | 100 | 10 | 0-32479-90822-8 |

♻️ PADS - OIL-ONLY - RECYCLED, LAMINATED, BONDED PADS

| | | | | |
|-------|---------------------------------|-----|----|-----------------|
| 91107 | Oil-Only Heavy Weight 15" x 18" | 100 | 15 | 0-32479-91107-5 |
|-------|---------------------------------|-----|----|-----------------|

ROLLS - Oil-Only, White

| ITEM # | DESCRIPTION | QTY/CASE | CASE WT (LBS) | UPC NUMBER |
|---|--------------------------------------|----------|---------------|-----------------|
| ROLLS - OIL-ONLY - MELTBLOWN ROLLS | | | | |
| 90854M | Oil-Only Medium Weight 30" x 150" ** | 1 | 18 | 0-32479-11205-2 |

SOCKS - Oil-Only, White

| ITEM # | DESCRIPTION | QTY/CASE | CASE WT (LBS) | UPC NUMBER |
|--------|------------------|----------|---------------|-----------------|
| 90898 | Oil-Only 3" x 4' | 40 | 36 | 0-32479-90898-3 |
| 90977 | Oil-Only 3" x 8' | 6 | 15 | 0-32479-90977-5 |

DRIP PILLOWS - Oil-Only, White

| ITEM # | DESCRIPTION | QTY/CASE | CASE WT (LBS) | UPC NUMBER |
|--------|--------------------|----------|---------------|-----------------|
| 90964 | Oil-Only 10" x 10" | 40 | 24 | 0-32479-90964-5 |

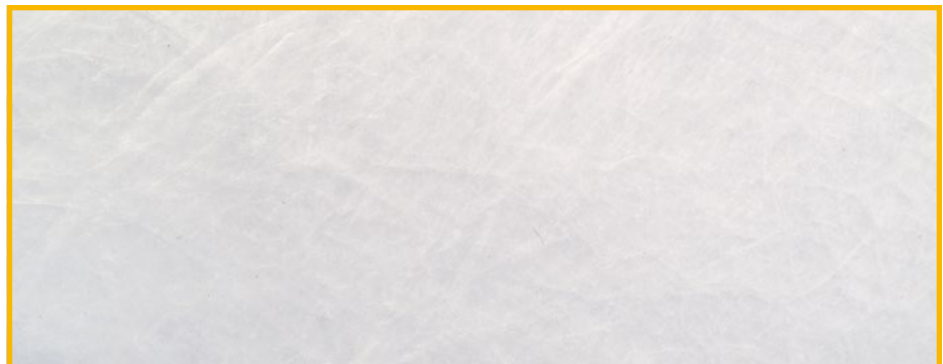
BOOMS - Oil-Only, White

| ITEM # | DESCRIPTION | QTY/CASE | CASE WT (LBS) | UPC NUMBER |
|--------|-------------------|----------|---------------|-----------------|
| 90857 | Oil-Only 5" x 10' | 4 | 23 | 0-32479-90857-0 |
| 90855 | Oil-Only 8" x 10' | 4 | 43 | 0-32479-90855-6 |

Product size, weight and absorption capacity are subject to manufacturing variances.

* Product perforated down the center.

** Product perforated down the center and across the width.



MELTBLOWN SURFACE - Available in Oil-Only and Universal Pads and Rolls (Oil-Only shown)



SONIC-BONDED SURFACE - Available in Oil-Only and Universal Pads and Rolls (Oil-Only shown)



SORBENTS - Universal (Gray), Oil-Only (White) Pads, Socks, Rolls, Booms

PADS - Universal, Gray

| ITEM # | DESCRIPTION | QTY/CASE | CASE WT (LBS) | UPC NUMBER |
|---------------------------------------|--------------------------------------|----------|---------------|-----------------|
| PADS - UNIVERSAL - BONDED PADS | | | | |
| 90821 | Universal Lightweight 15" x 18" ** | 200 | 12 | 0-32479-90821-1 |
| 90814 | Universal Medium Weight 15" x 18" ** | 100 | 9 | 0-32479-90814-3 |

PADS - UNIVERSAL - LAMINATED

| | | | | |
|-------|--------------------------------------|-----|---|-----------------|
| 90824 | Universal Medium Weight 15" x 18" ** | 100 | 9 | 0-32479-90824-2 |
|-------|--------------------------------------|-----|---|-----------------|

PADS - UNIVERSAL - RECYCLED, LAMINATED, BONDED PADS

| | | | | |
|-------|----------------------------------|-----|----|-----------------|
| 91108 | Universal Heavy Weight 15" x 18" | 100 | 15 | 0-32479-91108-2 |
|-------|----------------------------------|-----|----|-----------------|

ROLLS - Universal, Gray

| ITEM # | DESCRIPTION | QTY/CASE | CASE WT (LBS) | UPC NUMBER |
|---|--------------------------------------|----------|---------------|-----------------|
| ROLLS - UNIVERSAL - BONDED ROLLS | | | | |
| 90819M | Oil-Only Medium Weight 30" x 150" ** | 1 | 18 | 0-32479-11224-3 |

SOCKS - Universal, Gray

| ITEM # | DESCRIPTION | QTY/CASE | CASE WT (LBS) | UPC NUMBER |
|--------|-------------------|----------|---------------|-----------------|
| 90890 | Universal 3" x 4' | 40 | 36 | 0-32479-90890-7 |
| 90976 | Universal 3" x 8' | 6 | 15 | 0-32479-90976-8 |

Product size, weight and absorption capacity are subject to manufacturing variances.

** Product perforated down the center and across the width.

* Product perforated down the center.



PADS - Universal - Bonded



SOCKS - Universal



SONIC-BONDED SURFACE - Available in Oil-Only and Universal Pads (Universal shown)

BUFFALO INDUSTRIES • TOLL-FREE: 800-683-0052

Fast Facts About Sorbents

- **Oil-Only:** (WHITE) Absorb oil-based fluids such as motor oil and hydraulic/transmission fluid. Won't absorb water.
- **Universal:** (GRAY) Absorb all oil- and water-based fluids, including paint, solvents, and acids.
- **Pads:** Economical, easy to apply and pick up after spills.
- **Rolls:** Best for large spills and high traffic areas.
- **Booms & Socks:** For spill containment on water and land, or around drains and equipment.
- **Meltblown:** Random-direction strands without lamination or bonding. Most economical sorbent.
- **Lamination:** Produces a no-lint sorbent, best used on rough and/or irregular surfaces.
- **Sonic Bonding:** Spot-bonded layers for strength, durability.

Spill Kits

Buffalo's Spill Kits solve your needs for immediate, reliable and portable spill containment. Each kit is available with oil-only (white) or universal (gray) polypropylene sorbents. Kits contain everything you need for quick and effective response to an oil or chemical spill. Please refer to the "Fast Facts About Sorbents" chart on page 17 for further explanation about sorbents and their characteristics.



OIL-ONLY SORBENT PADS

SPILL KITS

| ITEM # | DESCRIPTION | QTY/CASE | CASE WT (LBS) | UPC NUMBER |
|--|---|----------|---------------|-----------------|
| 5 GALLON ECONOMY/QUICK-RESPONSE SPILL KITS - Zippered Storage Bag | | | | |
| Contains 15 medium weight, bonded pads, 3-4' socks, 1 disposal bag, 1 pair nitrile gloves and instructions. | | | | |
| 92000 | Universal Gray <i>(Retail Packaging.)</i> | 5 | 24 | 0-32479-92000-8 |
| 92001 | Oil-Only White <i>(Retail Packaging.)</i> | 5 | 24 | 0-32479-92001-5 |
| 5 GALLON BUCKET SPILL KITS - Snap-on Lid | | | | |
| Contains 12 medium weight, bonded pads; 2-4' Socks, 1 disposal bag, 1 pair of nitrile gloves and instructions. | | | | |
| 92050 | Universal Gray | | 5.5 | 0-32479-92050-3 |
| 92051 | Oil-Only White | | 5.5 | 0-32479-92051-0 |
| 6.5 GALLON BUCKET SPILL KITS - Screw-on Lid | | | | |
| Contains 15 medium weight, bonded pads, 1-4' Sock, 1-8' Sock, 1 pair of goggles, 1 disposal bag, 1 pair of nitrile gloves, 1 guidebook and instructions. | | | | |
| 92010 | Universal Gray | | 8.5 | 0-32479-92010-7 |
| 92011 | Oil-Only White | | 8.5 | 0-32479-92011-4 |
| 20 GALLON POLY-OVERPACK SPILL KITS - Screw-on Lid | | | | |
| Contains 25 medium-weight, bonded pads, 4-4' Socks, 1-8' Sock, 1 pair of goggles, 2 disposal bags, 2 pairs of nitrile gloves, 1 guidebook and instructions. | | | | |
| 92020 | Universal Gray | | 19 | 0-32479-92020-6 |
| 92021 | Oil-Only White | | 19 | 0-32479-92021-3 |
| 30 GALLON POLY-OVERPACK SPILL KITS - Screw-on Lid | | | | |
| Contains 50 medium weight, bonded pads, 4-4' Socks, 2-8' Socks, 1 pair of goggles, 2 disposal bags, 2 pairs of nitrile gloves, 1 guidebook and instructions. | | | | |
| 92030 | Universal Gray | | 26 | 0-32479-92030-5 |
| 92031 | Oil-Only White | | 26 | 0-32479-92031-2 |
| 65 GALLON POLY-OVERPACK SPILL KITS - Screw-on Lid | | | | |
| Contains 100 medium weight, bonded pads, 6-4' Socks, 6-8' Socks, 2 pairs of goggles, 4 disposal bags, 4 pairs of nitrile gloves, 1 guidebook and instructions. | | | | |
| 92060 | Universal Gray | | 100 | 0-32479-92060-2 |
| 92061 | Oil-Only White | | 100 | 0-32479-92061-9 |
| 95 GALLON POLY-OVERPACK SPILL KITS - Screw-on Lid | | | | |
| Contains 100 medium weight, bonded pads, 8-4' Socks, 8-8' Socks, 2 pairs of goggles, 4 disposal bags, 4 pairs of nitrile gloves, 1 guidebook and instructions. | | | | |
| 92090 | Universal Gray | | 150 | 0-32479-92090-9 |
| 92091 | Oil-Only White | | 150 | 0-32479-92091-6 |

We also offer other spill containment options. Please inquire for more information.



OIL-ONLY SORBENT PADS & SOCKS



5 GALLON ECONOMY/
QUICK RESPONSE
SPILL KITS
Universal - Gray
Oil-Only - White



5 GALLON BUCKET
SPILL KITS
Universal - Gray
Oil-Only - White



6.5 GALLON BUCKET
SPILL KITS
Universal - Gray
Oil-Only - White



20 GALLON
POLY-OVERPACK SPILL KITS
Universal - Gray
Oil-Only - White



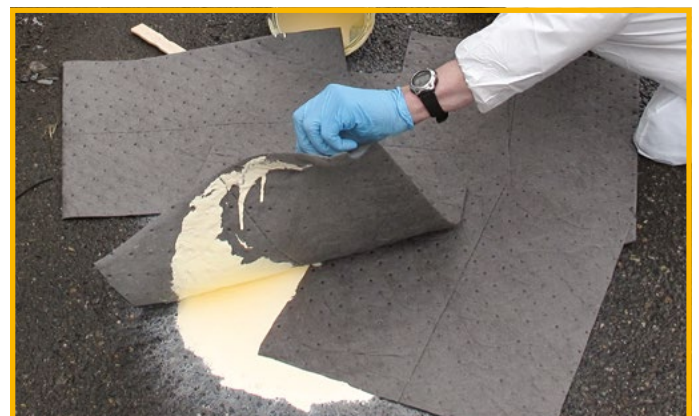
30 GALLON
POLY-OVERPACK SPILL KITS
Universal - Gray
Oil-Only - White



65 GALLON POLY
OVERPACK SPILL KITS
Universal - Gray
Oil-Only - White



95 GALLON
POLY-OVERPACK SPILL KITS
Universal - Gray
Oil-Only - White



UNIVERSAL SORBENT PADS

Pallet Displays

Open-front, interlocking pallet display boxes. Ideal for off-shelf, promotional sales. Offered in Half Pallets (6 boxes), Full Pallets (12 boxes) and Split Pallets (full or half). Contact us for the list of items offered in Pallet Displays.

Pallet Box Dimensions: 20" wide x 17" high x 23.75" deep

FULL Pallet Dimensions: 42" wide x 64" high x 48" deep

HALF Pallet Dimensions: 42" wide x 64" high x 24" deep





1 POUND BAG



4 POUND COMPRESSED POLY BAG



8 POUND COMPRESSED POLY BAG



25 POUND COMPRESSED POLY BAG



50 POUND COMPRESSED POLY BAG



4 POUND BOX



8 POUND BOX



25 POUND BOX



50 POUND BOX

Packaging Program

At Buffalo, we pride ourselves on an across-the-board, unified look for our packaging, drawing on our more than 80 years of experience. We offer a full range of sizes, from small to large, appealing to impulse retail consumers, vending machine sales, industrial users and aftermarket channels.

Our strong, unified style means that our products create a sharp and eye-catching presence in-store, online and in print.

Our distinctive packaging, with its bold, colorful graphics, provides concise and easy-to-understand product information and usage suggestions. Our packaging program lends itself to both retail and wholesale planogram sales displays.

- Cloth Wipers are available in a variety of bags and boxes, from 1 pound to 50 pounds.
- 4 and 8 Pound boxes create eye-catching, impulse-satisfying stack-outs in showroom displays.
- Compressed poly bags are space-saving alternatives to corrugated boxes.
- Some bagged and boxed items are available in full and half pallet order multiples.

Recycled White T-Shirts are shown here as representative examples. Packages are not shown to scale or relative size.



BUFFALO INDUSTRIES LLC

Your partner for cleaning and maintenance products™

SEATTLE:

Corporate Headquarters, Customer Service and Manufacturing & Distribution Center:

7979 S. 180th Street
Kent, WA 98032

TOLL-FREE: 800-683-0052

TEL: 206-682-9900

FAX: 206-682-9907

E-MAIL: Office@BuffaloIndustries.com

WEB: www.BuffaloIndustries.com

HOUSTON:

Manufacturing & Distribution Center:

6303 Brookhill Drive
Houston, TX 77087

TOLL-FREE: 800-683-0052

Terms and Conditions

PRICES: All prices and terms are subject to change without notice.

TERMS: Net 30 days.
Minimum order \$750.00

CLAIMS: Claims for concealed shortages or errors in shipment must be made within 15 days of receipt of goods. If the claim refers to carton shortages for shipments that have been received and re-taped by the carrier, then a copy of the signed freight bill should be enclosed with your claim.

RETURNS: Prior written authorization must be obtained from the Seattle Office. All returns are subject to a 15% restocking charge. Product must be in original box and in saleable condition.